

EUTECH INSTRUMENTS

Technology Made Easy ...

IMPORTANT NOTE TO USER:

The Data Acquisition Software program enclosed (in CD-ROM) has been updated from the DOS version *Cydata* program to Microsoft Windows-based *CyberComm Portable* program.

PLEASE IGNORE THE SECTION THAT MAKE REFERENCE TO THE CYDATA PROGRAM IN YOUR INSTRUCTION MANUAL.

For enquiries and additional information, contact information can be found at the end of this guide and in your instruction manual.

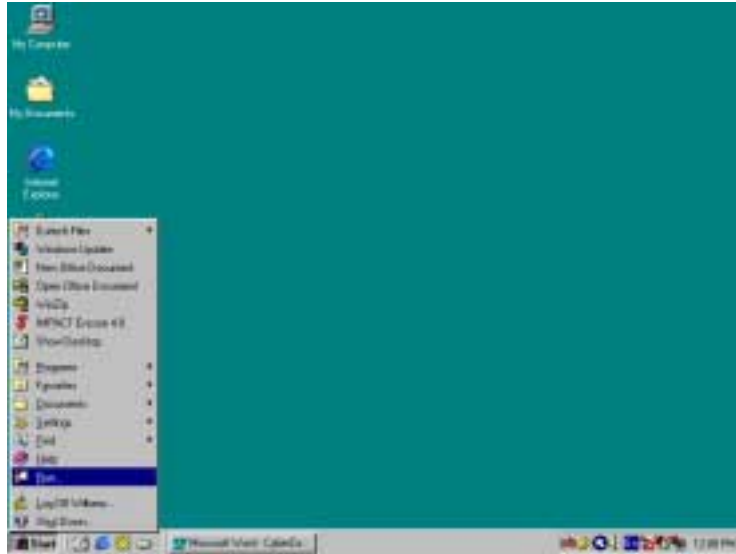
Installation and Instruction Guide on CyberComm Portable Data Acquisition Software (DAS) Program

This Installation and Instruction Guide is used for the following meter models:

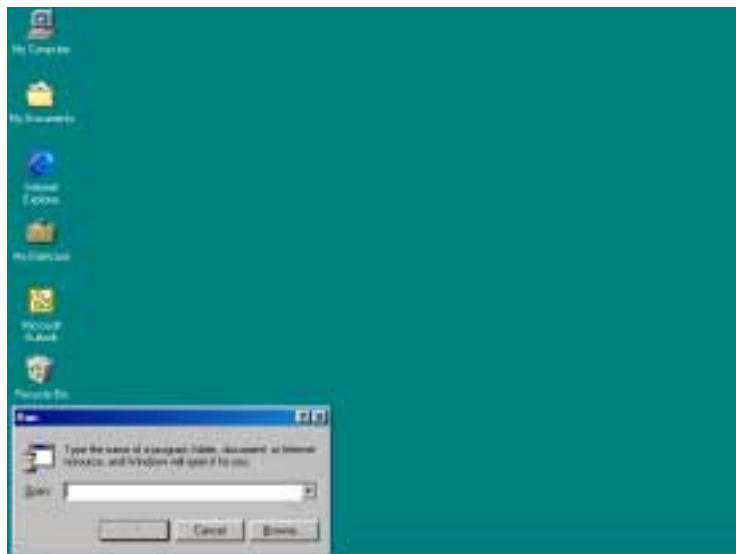
CyberScan pH 100 portable pH meter; &
CyberScan CON 200 portable Conductivity meter

As of June 2001

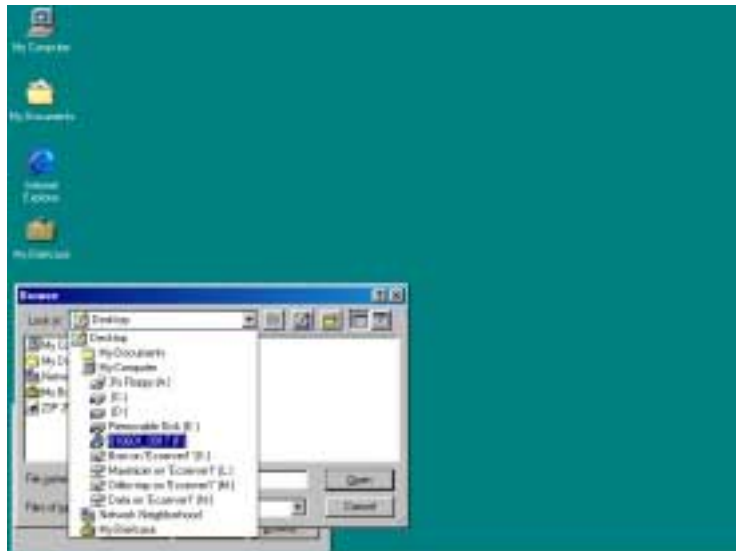
1- Installation Guide



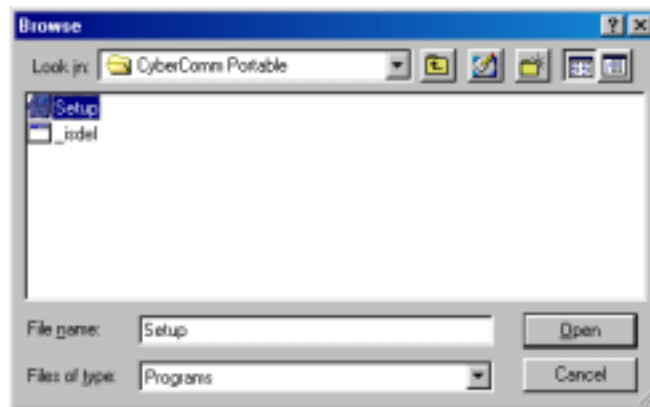
- Figure 1 - Insert Eutech Instruments' CD-ROM containing Data Acquisition Software (DAS) into your CD-ROM drive and click on START button and RUN command.



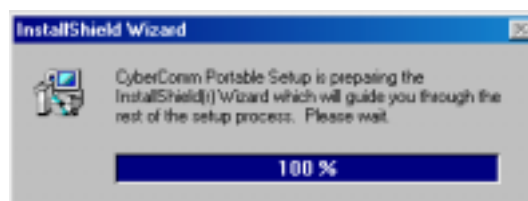
- Figure 2 - Click on 'Browse' button and locate CD-ROM drive



- Figure 3 - Locate the CyberComm Portable Setup program in the CD-ROM under "CyberComm Portable" sub-directory.



- Figure 4 - Select "Setup" program and click the OPEN button.



- Figure 5 - InstallShield Wizard dialog box appears.



• Figure 6 - Click on Next button.



• Figure 7 - Key in your name and company name and click NEXT button.



- Figure 8 - To select another Destination Directory to install the program, click on BROWSE button. Otherwise, click NEXT button.



- Figure 9 - Creating a new program folder. Click on NEXT button.



• Figure 10 - Click on NEXT button.



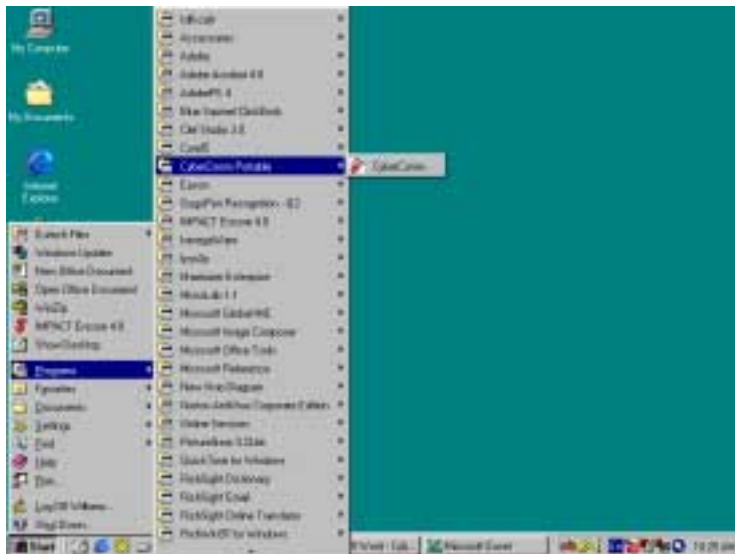
• Figure 11 - The CyberComm Portable DAS program is fully installed. Click on FINISH button to end installation.

2- RUNNING CYBERCOMM PORTABLE DATA ACQUISITION SOFTWARE (DAS) PROGRAM

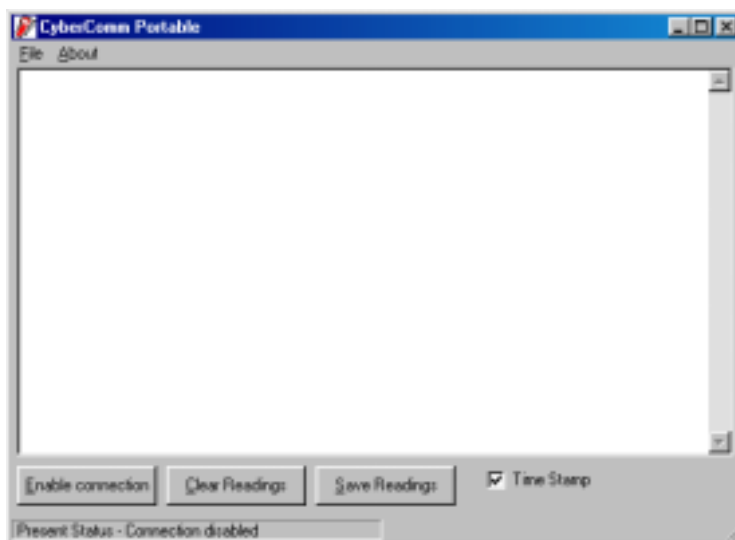
Before running the CyberComm data acquisition software program, please ensure that the RS232C cable is connected between the computer's serial port and the meter's port.

A 1-metre RS232C cable, 9-pin male to 9-pin female connector (Order No. EC-CA01M09F09) is supplied with the CyberScan portable meter.

For additional information on the connection, please refer to the section "**Connecting the RS232C**" on Eutech Instruments' instruction manual for the respective meters.



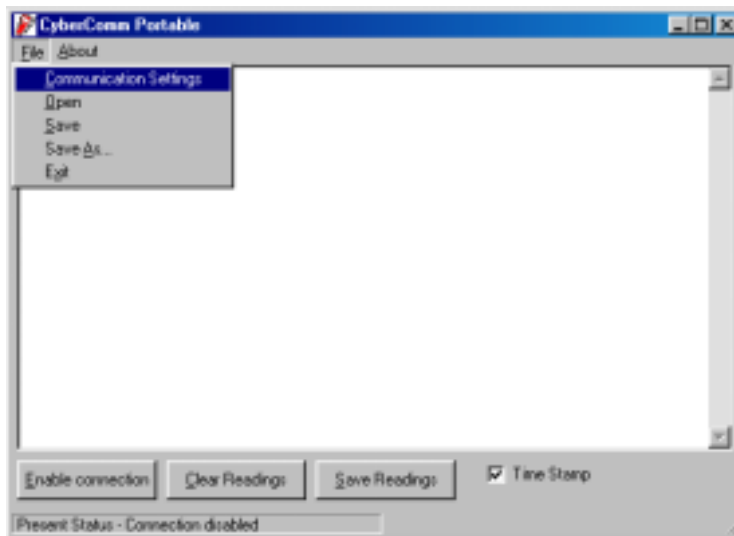
• Figure 12 - Run the CyberComm Software program



• Figure 13 - The opening screen will appear as above.

BUTTONS & CHECK-BOX

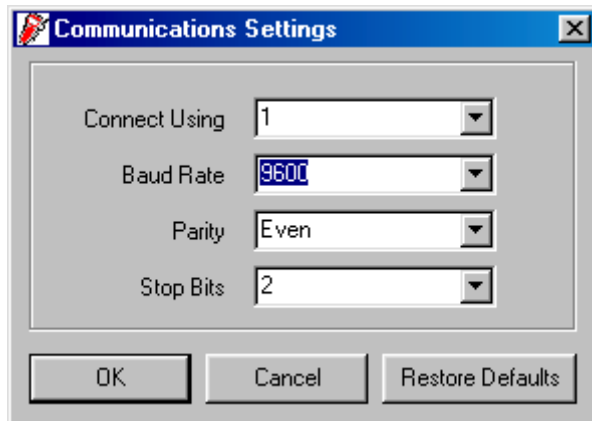
- Enable Connection: - Click this button to enable communication between meter and computer.
- Clear Readings: - To clear all data and start all over again.
- Save Readings: - To save all data displayed in either *.dat or *.txt format.
- Time Stamp: - To include Time and Date stamp when collecting the data. Time and date information comes from the computer.



- Figure 14 - Under File Menu setting, you can change various parameters. Under ABOUT menu, details of Eutech Instruments' contact information, email address and updates are shown.

MENU

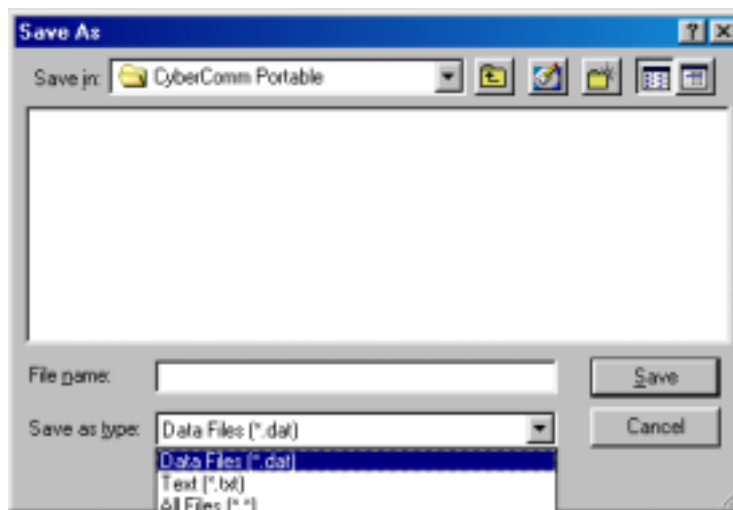
- Communication Settings: - To set communication port number, baud rate speed, parity and stop bits protocol.
- Open: - To open previously saved data file.
- Save: - To save current data captured.
- Save As: - To save current data set in another format such as *.dat or *.txt.
- Exit: - To exit from CyberComm Data Acquisition Software program.



- Figure 15 - Communication Settings for computer's com port. It must **match** with COM port settings on CyberScan portable meter. Please refer to meter's instruction manual under *Communication Settings* for more information.

COMMUNICATION SETTINGS

- Connecting Use: - To select communication port, 1 or 2.
- Baud Rate: - To select different baud rate, 2400, 4800, 9600 or 19200 bps (bits per second)
- Parity: - To select different parity, Even, Odd or None.
- Stop Bits: - To select different stop bits, 1 or 2.

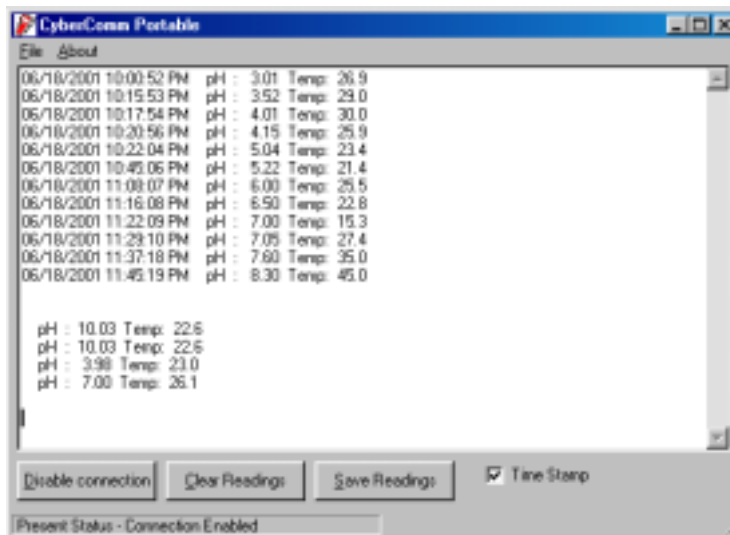


- Figure 16 - Under SAVE AS menu, you can save your data as *.dat or *.txt formats

3- CAPTURING AND PRINTING DATA INTO COMPUTER USING CYBERCOMM PORTABLE

After matching the Communication Settings between your computer using CyberComm DAS and the CyberScan portable meter, you can now capture data into your computer for analysis and storage purposes.

- 1) Ensure the 1-metre RS 232C communication cable (supplied with the meter) is connected between the computer's communication port and CyberScan Portable meter's COM port. Refer to meter's instruction manual for connection procedure.
- 2) Switch on the CyberScan Portable meter and run the CyberComm DAS software as indicated in Figures 12 and 13.
- 3) Click "ENABLE CONNECTION" button.
- 4) With the CyberScan Portable meter switched ON, press the PRINT key to send data to the computer. See Figure 17 below.
- 5) You can use MODE key on the meter and change to other parameter such as mV, Rel mV, Conductivity or TDS, and print the data accordingly.
- 6) You can also check off the Time Stamp function, so as to print without the Time and Date information.
- 7) You can click Clear Readings button to begin another set of measurements, or click Save Readings to store readings for future retrieval.

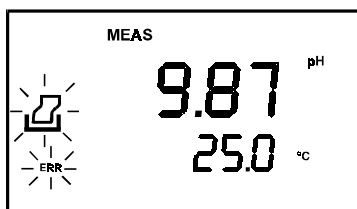


• Figure 17 - A set of data print in CyberComm Portable DAS

4- TROUBLE-SHOOTING GUIDE

a) Problem: Unable to PRINT

When press PRINT key on CyberScan Portable meter, the "Print" and "Err" annunciators blink on the meter's LCD screen as shown in Figure 18.



• Figure 18 - "Print" and "Err" icons blinking

POSSIBLE CAUSES	SOLUTIONS
You have not "ENABLE CONNECTION" in the CyberComm DAS program.	Click on "ENABLE CONNECTION" in the CyberComm DAS program.
The "Communication Settings" in the CyberComm DAS program is different from meter's setup.	Match the COM port number, baud rate, parity and stop bits information between the CyberComm DAS program and the meter.
The COM port number in the CyberComm DAS program is wrong.	Change the COM port number (1 or 2) in the CyberComm DAS program.
Your computer's COM port setting may be wrong.	Check your computer's hardware settings (through Windows OS, BIOS, or any other OS) and refer to computer's manual or consult with the computer's manufacturer.
You may use the wrong communication cable.	Make sure you use the RS232C cable supplied together with the meter (Part No. EC-CA01M09F09). Check the RS232C configuration as described in the meter's instruction manual.

b) Problem: Unusual characters appeared in data

When press PRINT key on CyberScan Portable meter, additional characters such as the following appeared.

06/18/2001 1:48:38 PM? R.mv? -900? Temp: ?22.6

POSSIBLE CAUSES	SOLUTIONS
The Baud rate, parity or stop bit information are not matched.	Check the communication setup for both CyberComm DAS program and meter and ensure both are the same.

5- ADDITIONAL INFORMATION

For additional information please check out our website at <http://www.eutechinst.com>.

To report any bugs, please email to techsupport@eutechinst.com.